

Housing: useful contacts



We're here to help

If you're worried about your situation, we can help you. Contact us for confidential, free of charge support on 0808 801 0550. Our advisors will listen without judging and will work with you as best they can to achieve a positive outcome. If you prefer you can email: enquiries@ltcharity.org.uk or visit our website: www.licensedtradecharity.org.uk. It's full of useful information about the kind of issues we know people who work in the licensed trade face.

Shelter

Shelter works to alleviate the distress caused by homelessness and bad housing by giving advice, information and advocacy to people in housing need.

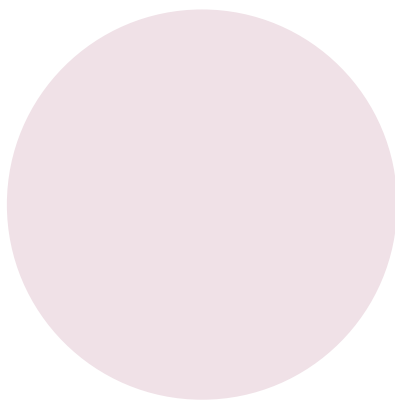
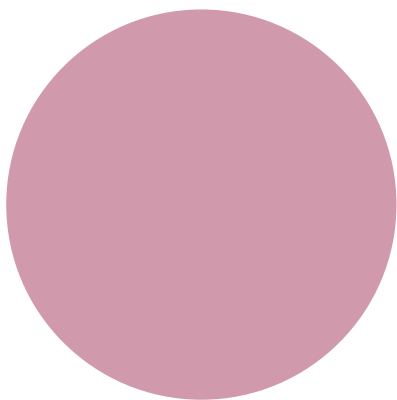
Helpline: 0808 800 444. Open Monday - Friday 8am - 8pm; Saturday and Sunday 8am - 5pm

www.shelter.org.uk

Government Housing

Has information on legal obligations and rights when renting, buying or owning a home, plus information about Council Tax, what to do if you're homeless and where to get help if you have a housing dispute.

www.gov.uk/browse/housing



The First Tier Tribunal for Scotland (Housing and Property Chamber)

The Chamber was formed to deal with determinations of rent or repair issues in private-sector housing as well as aiding in exercising a landlord's right of entry. The Chamber also provides relatively informal and flexible proceedings to help resolve issues that arise between homeowners and property factors.

Telephone: 0141 302 5900 Email: HPC_admin@scotcourtribunals.gov.uk

www.housingandpropertychamber.scot

Shelter Cymru

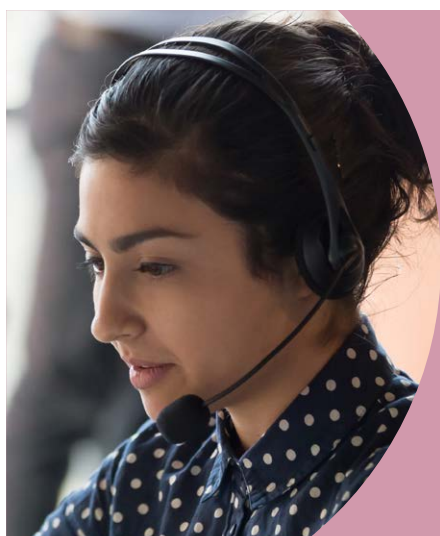
Helping thousands of people each year in Wales by offering free, independent advice.

www.sheltercymru.org.uk

Local Housing Allowance Rates

Check how much housing allowance you could be eligible for in your area by using your postcode.

lha-direct.voa.gov.uk



The Licensed Trade Charity are available 24/7, if you'd like to talk about your situation, we can help you. Contact us for confidential, free of charge support. If you are experiencing any of the issues covered in this fact sheet, in the first instance call our helpline on:

0808 801 0550

Our Helpline Team will listen without judging and will work with you as best they can to achieve a positive outcome. If you prefer, you can email: enquiries@ltcharity.org.uk or visit our website at www.licensedtradecharity.org.uk, it's full of useful information about the kind of issues we know people who work in the licensed trade face.

 0808 801 0550

 enquiries@ltcharity.org.uk

 licensedtradecharity.org.uk

Note: This guide is not exhaustive. It has been produced by the Licensed Trade Charity to provide you with an overview of the issue in question. We are grateful to all specialist organisations who support our charity and are available to you should you be experiencing this particular issue.
Disclaimer: LTC has used reasonable care in compiling and presenting this information, but it does not assume liability for any errors or omissions in the content or any third party sources. LTC expressly disclaims liability for errors or omissions.

 **LICENSED
TRADE
CHARITY**